



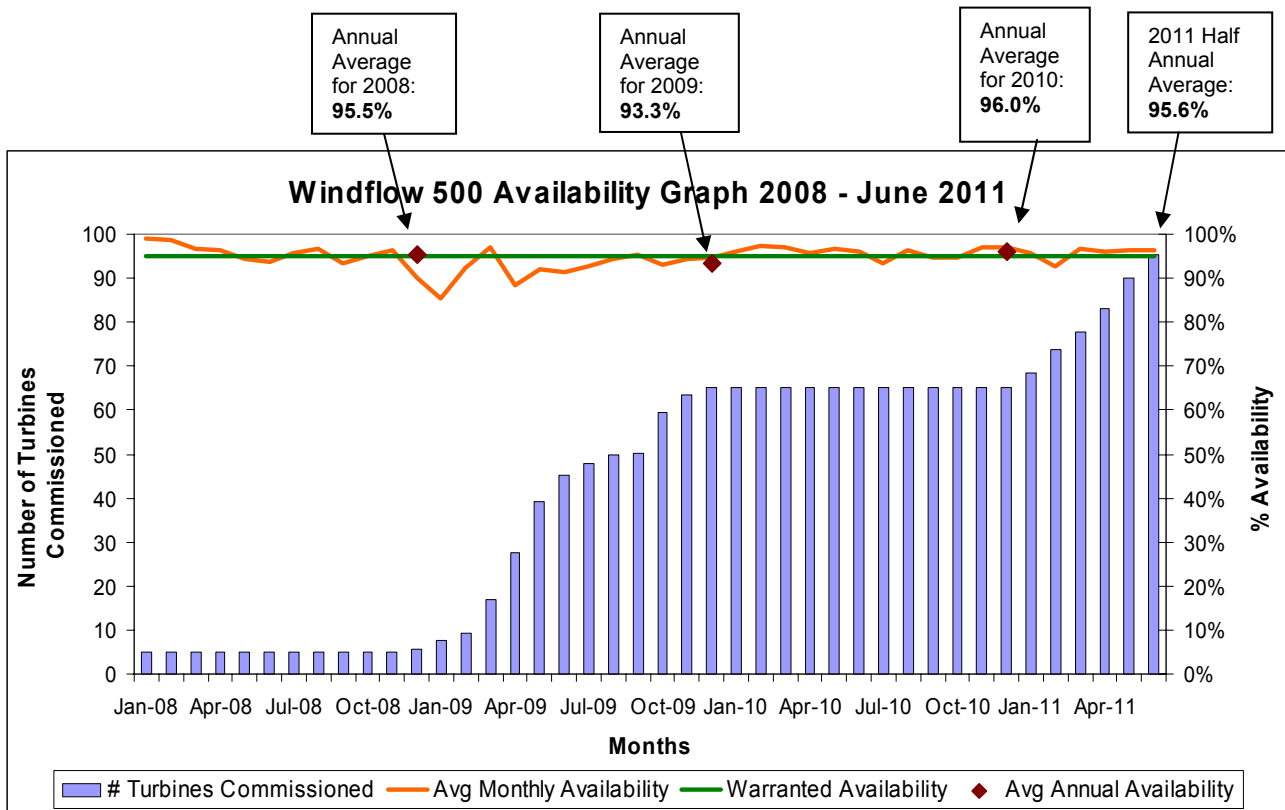
Windflow 500 kW Fleet Performance Overview

Number of turbines commissioned 97 (not including prototype turbine)
 Cumulative track record 157 turbine-years
 Average availability for 2010 96.0%
 (Figures are as of 1 July 2011)

Windflow 500 installed turbines

- The first prototype turbine was installed in 2003, and replaced by a production model in 2005.
- The first five production turbines were installed in mid-2006 and another 60 turbines between December 2008 and November 2009.
- A further 32 turbines were installed between October 2010 and June 2011.

The size of the fleet and its average operating availability are shown below over time.



Note about availability

A turbine is deemed to be unavailable if it has been shut down for maintenance, or due to an alarm. However, if it is only shut down due to insufficient wind speed or high winds this will count as available. If there are system operator constraints, grid faults or other abnormal events outside Windflow's control the turbine will also count as being available.

Windflow does not include down time due to scheduled maintenance as available, nor does it "pause" the availability for extended outages due to turbine component failures.